

THE

PHAI DON

ATLAS

OF 21ST

CENTURY

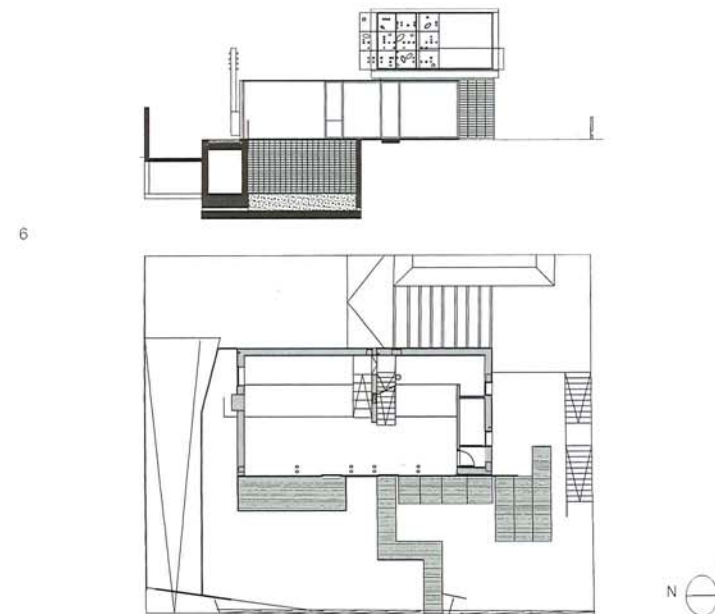
WORLD

ARCHITECTURE

0645-0676 Italy

0645	Torino, Italy	Torino 2006 Winter Olympic Games Ice Hockey Stadium	Arata Isozaki & Associates	2006 SPO
------	---------------	---	----------------------------	----------





0675 Giulianova is a small town on the eastern coast of central Italy. C+V House is located on a sloped site between the Lido, a recently developed neighbourhood by the beach, and the Paese, the historic town up in the hills. The whole area is characterized by the diffuse urban sprawl inhabiting the Adriatic coast, where one municipality merges with the next. This house is a

in a rectangular two-storey, stone-clad volume supporting a white plastered box on top, which projects towards the garden and the hill in a dangerous-looking cantilever. The structure turns its back to the sea and the city, instead choosing the uncultivated vegetation of the hill as its favoured vista. The basement level is oriented towards an internal patio on the hillside, and shows a

garden. The main space is focused on a stair whose steel steps turn around a short wall for a sculptural effect. On the first level, private spaces like bedrooms, a sauna, an office and bathrooms, are organized within the cantilevered box. The horizontally arranged stone slats covering the base volume create a thin, shimmering skin, an effect enhanced by the ornamental rim of

of the upper box is perforated by irregularly curved openings, a shape that repeats in the railings of the first floor balcony and around the patio in the garden.

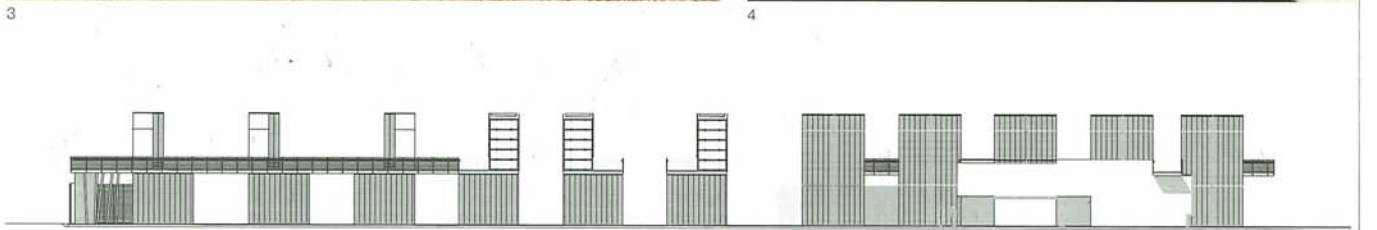
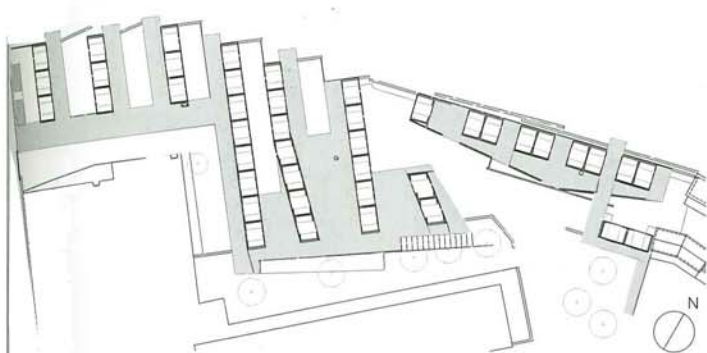
6 Section through building
7 Ground-floor plan

Client
Confidential

Area
280 m²/3,014 sq ft

Cost
€350,000

- 1 Garden facade with ornamental cladding
- 2 Exterior view with driveway
- 3 First-floor room, inside



0676 The new cemetery is located on a hill south of Ortona in the Abruzzi region. During World War II, this was the site of fierce battling between Canadian and German soldiers. The new cemetery extends an existing war cemetery towards the northern edge of the hill. Overlooking the coastal landscape, this project plays with light and shadow, creating sharp contrasts in materiality and colour. New recesses were built in neat, two-storey blocks arranged in

straight lines, or streets, referencing the traditional layout of Italian cemeteries composed as little cities. Each long block is cut into cubes, leaving gaps filled with light. An outer cladding of local limestone in different colours contrasts with bright white plastering on inner and lateral walls, enhancing the impression of the cutout gap. The burial chambers and recesses are accessed from 'corridors' inside the blocks, some left empty to create zones of calm

passage. The bright Mediterranean sunlight alternates with sharp shadows cast from the walls of the blocks and the gaps in-between. The distinction between memorial space and circulation is a fine one, transmitted by colours, light and degrees of privacy. Quiet spaces are enclosed by the hard shell of limestone, offering both secluded areas for withdrawal and open balcony zones in the gaps between the cubes. Mourning here is both private and public, sheltered and social.

Spaces where encounters take place, like stairs and junctions, are marked by purple walls, the Catholic colour of penance. Clear shapes, forms and materiality give this cemetery the atmosphere of a working public space, and a truly communal space.

- 1 View of a cemetery 'street'
- 2 Open balconies between private areas
- 3 Purple walls mark communal spaces
- 4 Interior view of recesses

- 5 Site plan
- 6 Section through buildings

Client
Progetti & Finanza
Area
3,600 m²/38,750 sq ft
Cost
€1,470,000
Coordinates
42.3608 14.3983